



# Cisco Expressway Integration

Release 25.2

Aug 27, 2025

Copyright © 2025 VisionOSS Limited. All rights reserved.

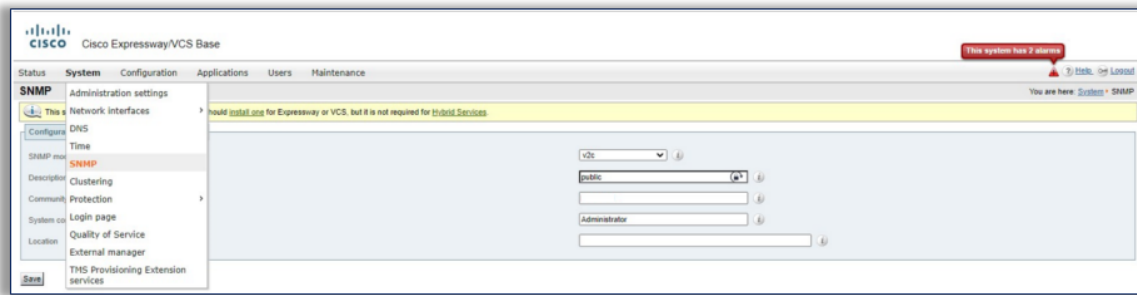
## Contents

|                                 |   |
|---------------------------------|---|
| Configure Cisco Expressway      | 1 |
| Set up Expressway on Arbitrator | 3 |

## Configure Cisco Expressway

1. Log in to your Expressway.
2. On the **System** tab, select **SNMP**, and fill out the following values in the order displayed here, then click **Save**:
  - **SNMP Mode**: for example v2c
  - **Description**: (optional) for example public
  - **Community Name**: community string name, for example cmpreadonly

- **System Contact:** for example Administrator



3. On the **Maintenance** tab, configure the following, then click **Save**:

3.1. At **Logging Options**:

- Set **Local event log verbosity** to between 1 and 4.
- Set **Media Statistics** to *On*.
- Set **Call Detail Records (CDR)** to *Service and Logging*.
- Set **Certification logging** to *Diagnostic*.

3.2. At **Remote syslog servers**, for **Remote syslog server 1**, insert the IP address of the Arbitrator.

3.3. At **System Metrics**, configure the following:

- Set **System Metrics Collection** to *On*.
- Set **Collection Interval (seconds)** to 60.
- At **Collection server address**, insert the IP address of the Arbitrator.
- Set **Collection server port** to 514.

**CISCO** Cisco Expressway/VCS Base

Status System **Configuration** Applications Users Maintenance

### Logging configuration

*i* This system currently has no release key. You should [install one](#) for Expressway or VCS, but it is not required for [Hybrid Services](#).

**Logging options**

Local event log verbosity: 4

Media statistics: On

Call Detail Records (CDR): Service and Logging

Certification logging: Diagnostic

**Remote syslog servers**

Remote syslog server 1: Address 172.30.42.109

Remote syslog server 2: Address

Remote syslog server 3: Address

Remote syslog server 4: Address

**System Metrics**

System Metrics Collection: On

Collection Interval (seconds): 60

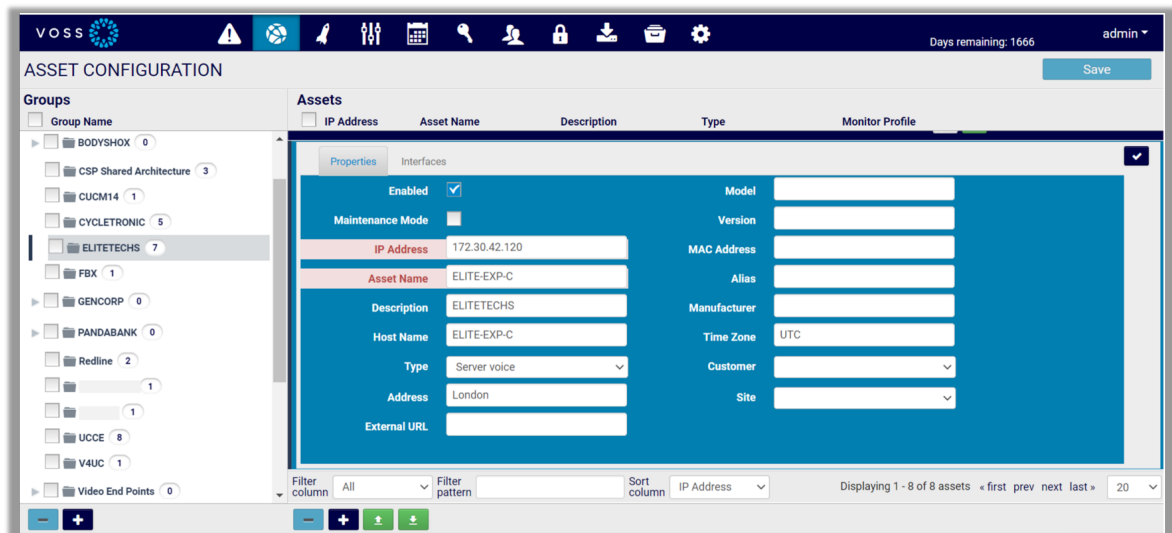
Collection server address: 172.30.42.109

Collection server port: 514

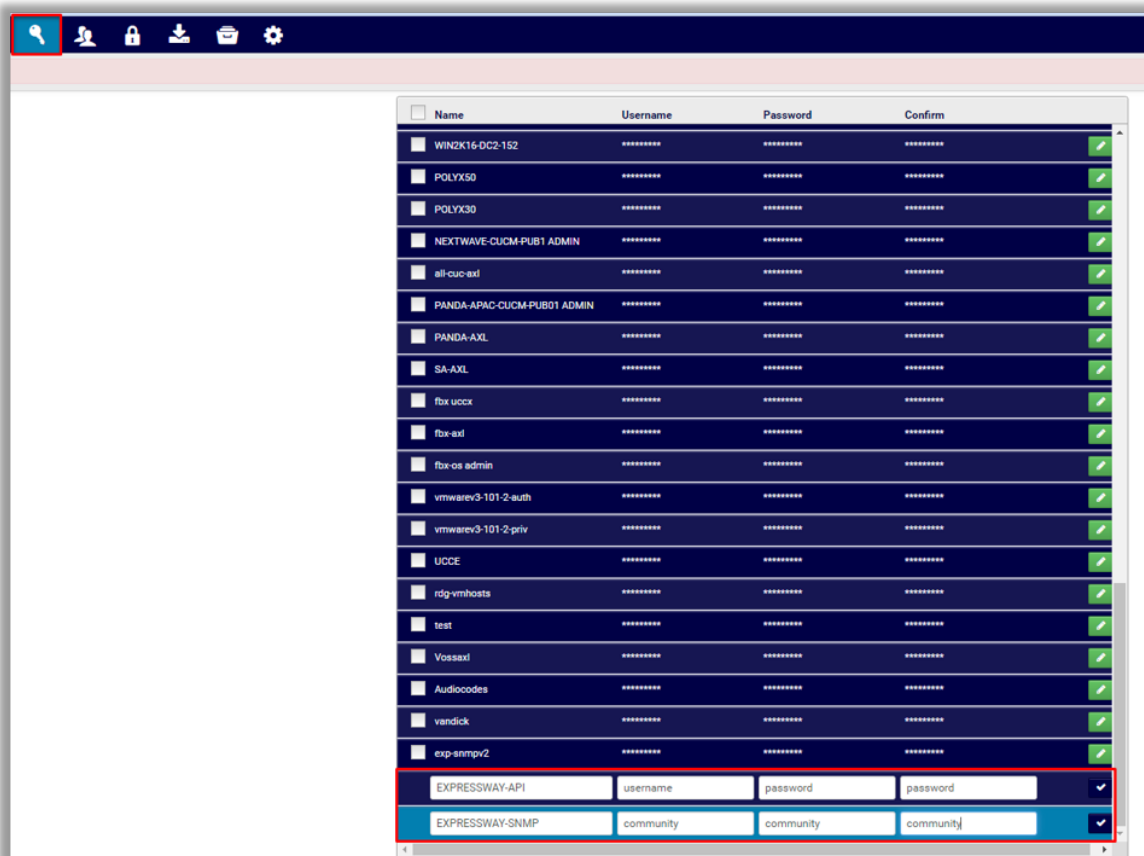
**Save**

## Set up Expressway on Arbitrator

1. Log in to Arbitrator.
2. Open the **Asset Configuration** page:  
Click the toolbar Spanner icon (**System Configuration**), then click the **Assets** icon.
3. Choose relevant probe group.
4. Click the Plus icon (+) at the bottom of the **Assets** panel to add Expressways as assets.
5. Scroll down to the **Properties** tab, then fill out IP address, asset name, description, host name, type, address, and other relevant details. Save your changes.



## 6. Create credentials for Expressway API and Expressway SNMP.



---

7. Assign the following probes to the Expressway assets, and configure values as indicated in the table:

| Probe                            | Configuration   |
|----------------------------------|---|
| PING Monitor                     | <ul style="list-style-type: none"><li>• Select <b>Enabled</b></li><li>• Set <b>Frequency</b> to <b>1 Minute</b></li><li>• Set <b>Credential 1</b> to <b>None</b></li><li>• Select <b>Start Time</b> as immediate</li><li>• Select <b>Days</b>, each day of the week</li></ul>   |
| Cisco Expressway-API             | <ul style="list-style-type: none"><li>• Select <b>Enabled</b></li><li>• Set <b>Frequency</b> to <b>10 Minutes</b></li><li>• Set <b>Credential 1</b> to <b>Expressway</b></li><li>• Set <b>Credential 2</b> to <b>None</b></li><li>• Select <b>Start Time</b> as immediate</li><li>• Select <b>Days</b>, each day of the week</li></ul>      |
| Cisco Expressway Call Detail-API | <ul style="list-style-type: none"><li>• Select <b>Enabled</b></li><li>• Set <b>Frequency</b> to <b>10 Minutes</b></li><li>• Set <b>Credential 1</b> to <b>Expressway</b></li><li>• Set <b>Credential 2</b> to <b>None</b></li><li>• Select <b>Start Time</b> as immediate</li><li>• Select <b>Days</b>, each day of the week</li></ul>      |
| Cisco Expressway - SNMP          | <ul style="list-style-type: none"><li>• Select <b>Enabled</b></li><li>• Set <b>Frequency</b> to <b>5 Minutes</b></li><li>• Set <b>Credential 1</b> to <b>exp-snmpv2</b></li><li>• Set <b>Credential 2</b> to <b>exp-snmpv2</b></li><li>• Select <b>Start Time</b> as immediate</li><li>• Select <b>Days</b>, each day of the week</li></ul> |

MONITOR PROFILE » ELITE-EXP-E

Groups

Probe Group

1-Cisco CUCM RIS CnDevice\_creds

1b-PING Monitor

4-Cisco CUCM Version

5-Cisco RTMT

6-Cisco Expressway-API

6a-Cisco Expressway Call Detail-API

6b-Cisco Expressway - SNMP

7-CUCM Perfmom AXL Counters

8-Cisco Unity Perfmom AXL Counters

9-Cisco IMP Perfmom AXL Counters

9a-CUCM-END USER

9b-VOSSAUC

AudioCodes Gateway

AudioCodes1

BODYSHOX-Cisco Unity AXL (BODY...

BODYSHOX-Cisco Unity AXL (BODY...

BODYSHOX-CUCM Perfmom AXL (B...

BODYSHOX-CUCM Perfmom AXL (B...

Templates/Profiles

| IT | Name                                | Frequency  | Credentials 1 & 2 | Enabled |
|----|-------------------------------------|------------|-------------------|---------|
| 1  | 6a-Cisco Expressway Call Detail-API | 10 Minutes | Expressway        | Enabled |
| 2  | 6b-Cisco Expressway - SNMP          | 5 Minutes  | exp-snmppv2       | Enabled |
| 3  | 1b-PING Monitor                     | 1 Minute   | None              | Enabled |

Copyright © 2025 VisionOSS Limited. All rights reserved.

6