



Cisco Expressway Integration

Release 25.1

Mar 26, 2025

Copyright © 2025 VisionOSS Limited. All rights reserved.

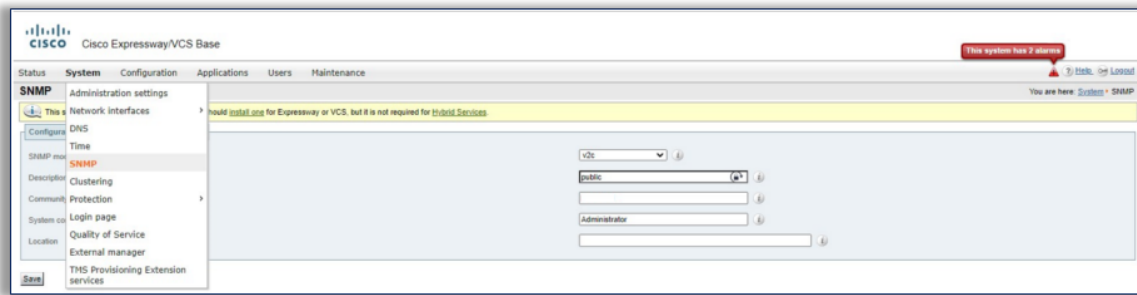
Contents

Configure Cisco Expressway	1
Set up Expressway on Arbitrator	3

Configure Cisco Expressway

1. Log in to your Expressway.
2. On the **System** tab, select **SNMP**, and fill out the following values in the order displayed here, then click **Save**:
 - **SNMP Mode**: for example v2c
 - **Description**: (optional) for example public
 - **Community Name**: community string name, for example cmpreadonly

- **System Contact:** for example Administrator



3. On the **Maintenance** tab, configure the following, then click **Save**:

3.1. At **Logging Options**:

- Set **Local event log verbosity** to between 1 and 4.
- Set **Media Statistics** to *On*.
- Set **Call Detail Records (CDR)** to *Service and Logging*.
- Set **Certification logging** to *Diagnostic*.

3.2. At **Remote syslog servers**, for **Remote syslog server 1**, insert the IP address of the Arbitrator.

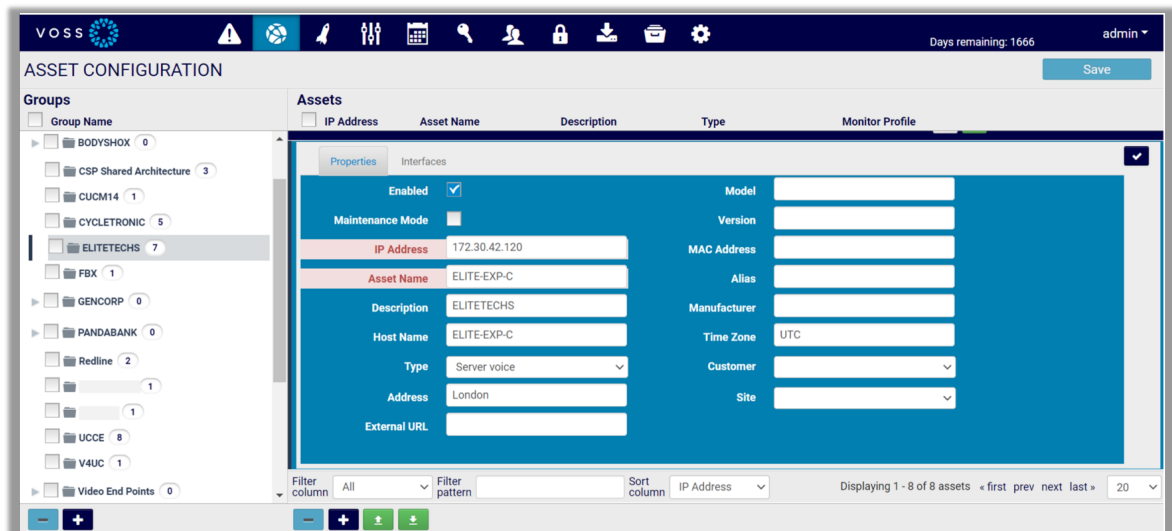
3.3. At **System Metrics**, configure the following:

- Set **System Metrics Collection** to *On*.
- Set **Collection Interval (seconds)** to 60.
- At **Collection server address**, insert the IP address of the Arbitrator.
- Set **Collection server port** to 514.

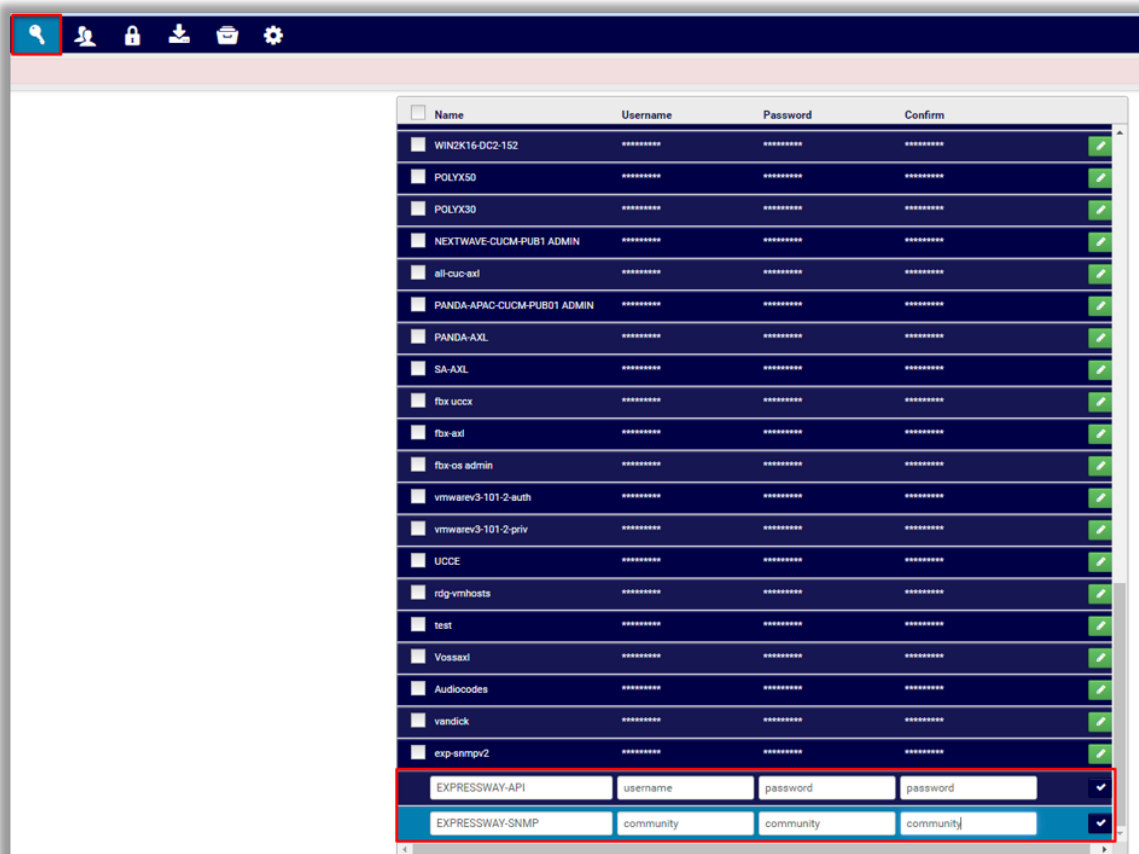
The screenshot shows the Cisco Expressway/VCS Base web interface. The top navigation bar includes Status, System, Configuration, Applications, Users, and Maintenance. The 'Configuration' tab is selected, and the 'Logging configuration' page is displayed. A message at the top states: 'This system currently has no release key. You should [install one](#) for Expressway or VCS, but it is not required for Hybrid Services.' The page is divided into three main sections: 'Logging options', 'Remote syslog servers', and 'System Metrics'. The 'Logging options' section includes 'Local event log verbosity' (set to 4), 'Media statistics' (set to On), 'Call Detail Records (CDR)' (set to Service and Logging), and 'Certification logging' (set to Diagnostic). The 'Remote syslog servers' section has four entries for 'Remote syslog server 1' through '4', each with an 'Address' field. The 'System Metrics' section includes 'System Metrics Collection' (set to On), 'Collection interval (seconds)' (set to 60), 'Collection server address' (set to 172.30.42.169), and 'Collection server port' (set to 514). A 'Save' button is located at the bottom left of the page.

Set up Expressway on Arbitrator

1. Log in to Arbitrator.
2. Open the **Asset Configuration** page:
Click the toolbar Spanner icon (**System Configuration**), then click the **Assets** icon.
3. Choose relevant probe group.
4. Click the Plus icon (+) at the bottom of the **Assets** panel to add Expressways as assets.
5. Scroll down to the **Properties** tab, then fill out IP address, asset name, description, host name, type, address, and other relevant details. Save your changes.



6. Create credentials for Expressway API and Expressway SNMP.



7. Assign the following probes to the Expressway assets, and configure values as indicated in the table:

Probe	Configuration
PING Monitor	<ul style="list-style-type: none">• Select Enabled• Set Frequency to 1 Minute• Set Credential 1 to None• Select Start Time as immediate• Select Days, each day of the week
Cisco Expressway-API	<ul style="list-style-type: none">• Select Enabled• Set Frequency to 10 Minutes• Set Credential 1 to Expressway• Set Credential 2 to None• Select Start Time as immediate• Select Days, each day of the week
Cisco Expressway Call Detail-API	<ul style="list-style-type: none">• Select Enabled• Set Frequency to 10 Minutes• Set Credential 1 to Expressway• Set Credential 2 to None• Select Start Time as immediate• Select Days, each day of the week
Cisco Expressway - SNMP	<ul style="list-style-type: none">• Select Enabled• Set Frequency to 5 Minutes• Set Credential 1 to exp-snmpv2• Set Credential 2 to exp-snmpv2• Select Start Time as immediate• Select Days, each day of the week

MONITOR PROFILE » ELITE-EXP-E

Groups

Probe Group

- > 1-Cisco CUCM RIS CnDevice_creds 3
- > 1b-PING Monitor 1
- > 4-Cisco CUCM Version 1
- > 5-Cisco RTMT 1
- > 6-Cisco Expressway-API 2
- > 6a-Cisco Expressway Call Detail-API 1
- > 6b-Cisco Expressway - SNMP 2
- > 7-CUCM Perfmom AXL Counters 1
- > 8-Cisco Unity Perfmom AXL Counters 1
- > 9-Cisco IMP Perfmom AXL Counters 1
- > 9a-CUCM-END USER 1
- > 9b-VOSSAUC 1
- > AudioCodes Gateway 1
- > AudioCodes1 1
- > BODYSHOX-Cisco Unity AXL (BODY... 2
- > BODYSHOX-Cisco Unity AXL (BODY... 1
- > BODYSHOX-CUCM Perfmom AXL (B... 1
- > BODYSHOX-CUCM Perfmom AXL (B... 1

Templates/Profiles

IT	Name	Frequency	Credentials 1 & 2	Enabled
1	6a-Cisco Expressway Call Detail-API	10 Minutes	Expressway Call Detail-API	Enabled
2	6b-Cisco Expressway - SNMP	5 Minutes	exp-snmppv2	Enabled
3	1b-PING Monitor	1 Minute	None	Enabled