



# Cisco Expressway Integration

Release 24.2

Nov 22, 2024

Copyright © 2024 VisionOSS Limited. All rights reserved.

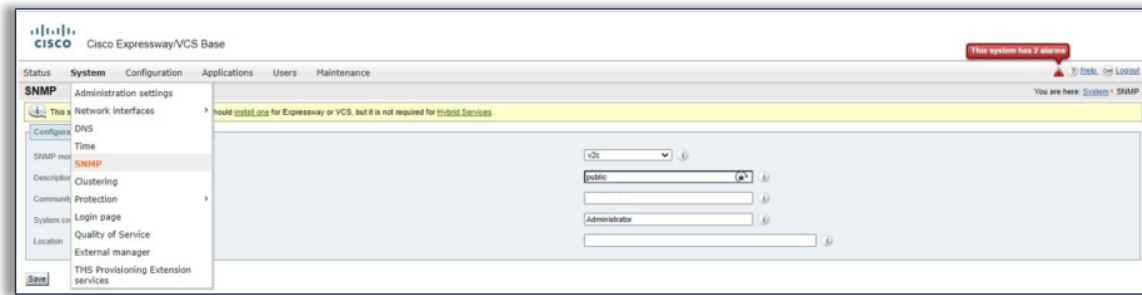
## Contents

Configure Cisco Expressway	1
Set up Expressway on Arbitrator	3

## Configure Cisco Expressway

1. Log in to your Expressway.
2. On the **System** tab, select **SNMP**, and fill out the following values in the order displayed here, then click **Save**:
  - **SNMP Mode**: for example v2c
  - **Description**: (optional) for example public
  - **Community Name**: community string name, for example cmpreadonly

- **System Contact:** for example Administrator



3. On the **Maintenance** tab, configure the following, then click **Save**:

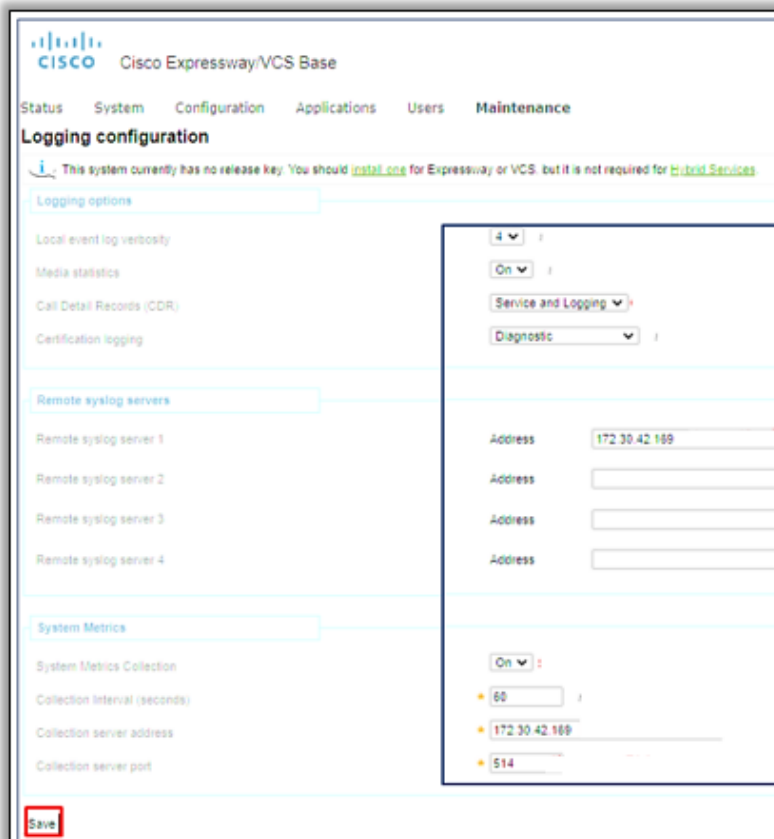
3.1. At **Logging Options**:

- Set **Local event log verbosity** to between 1 and 4.
- Set **Media Statistics** to *On*.
- Set **Call Detail Records (CDR)** to *Service and Logging*.
- Set **Certification logging** to *Diagnostic*.

3.2. At **Remote syslog servers**, for **Remote syslog server 1**, insert the IP address of the Arbitrator.

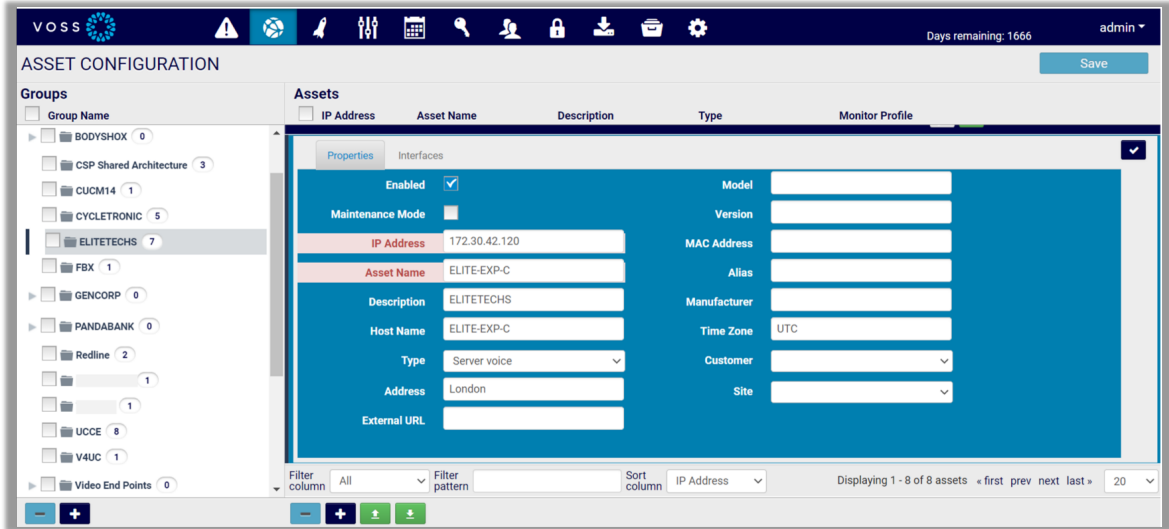
3.3. At **System Metrics**, configure the following:

- Set **System Metrics Collection** to *On*.
- Set **Collection Interval (seconds)** to *60*.
- At **Collection server address**, insert the IP address of the Arbitrator.
- Set **Collection server port** to *514*.

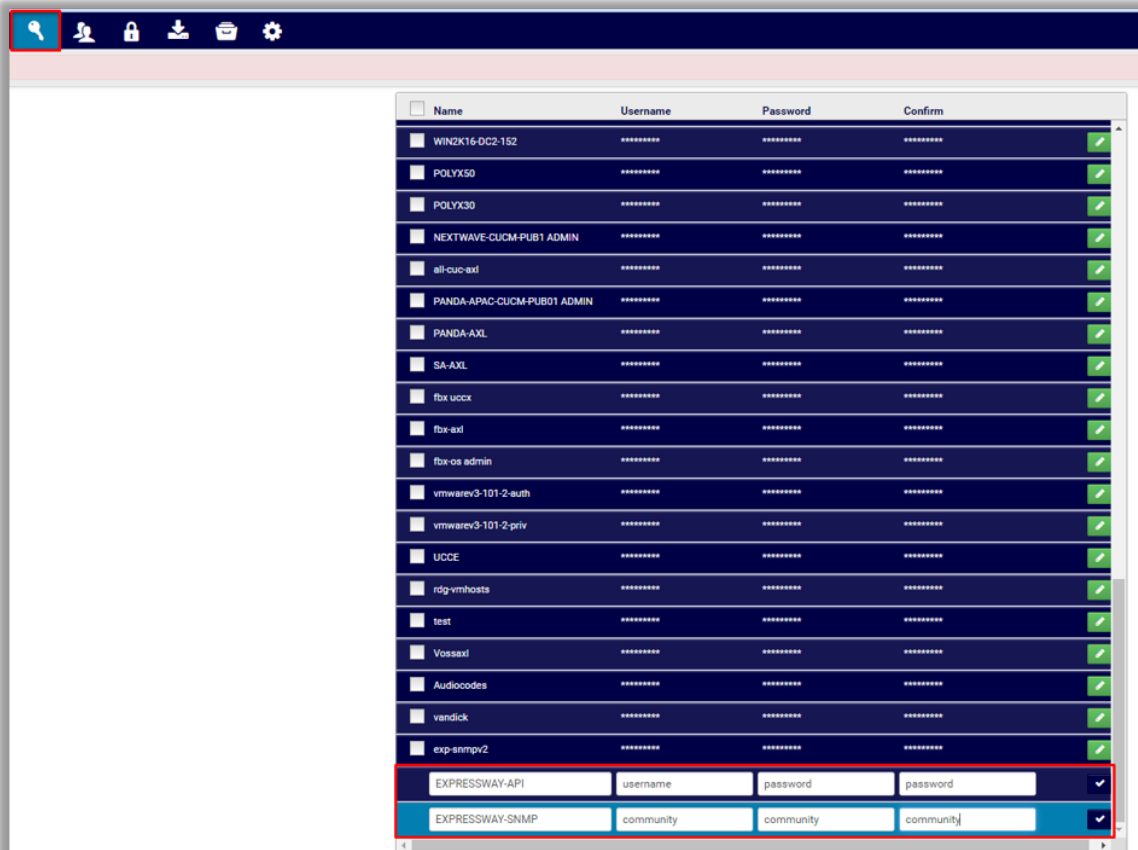


## Set up Expressway on Arbitrator

1. Log in to Arbitrator.
2. Open the **Asset Configuration** page:  
Click the toolbar Spanner icon (**System Configuration**), then click the **Assets** icon.
3. Choose relevant probe group.
4. Click the Plus icon (+) at the bottom of the **Assets** panel to add Expressways as assets.
5. Scroll down to the **Properties** tab, then fill out IP address, asset name, description, host name, type, address, and other relevant details. Save your changes.



6. Create credentials for Expressway API and Expressway SNMP.



---

7. Assign the following probes to the Expressway assets, and configure values as indicated in the table:

Probe	Configuration
PING Monitor	<ul style="list-style-type: none"><li>• Select <b>Enabled</b></li><li>• Set <b>Frequency</b> to <b>1 Minute</b></li><li>• Set <b>Credential 1</b> to <b>None</b></li><li>• Select <b>Start Time</b> as immediate</li><li>• Select <b>Days</b>, each day of the week</li></ul>
Cisco Expressway-API	<ul style="list-style-type: none"><li>• Select <b>Enabled</b></li><li>• Set <b>Frequency</b> to <b>10 Minutes</b></li><li>• Set <b>Credential 1</b> to <b>Expressway</b></li><li>• Set <b>Credential 2</b> to <b>None</b></li><li>• Select <b>Start Time</b> as immediate</li><li>• Select <b>Days</b>, each day of the week</li></ul>
Cisco Expressway Call Detail-API	<ul style="list-style-type: none"><li>• Select <b>Enabled</b></li><li>• Set <b>Frequency</b> to <b>10 Minutes</b></li><li>• Set <b>Credential 1</b> to <b>Expressway</b></li><li>• Set <b>Credential 2</b> to <b>None</b></li><li>• Select <b>Start Time</b> as immediate</li><li>• Select <b>Days</b>, each day of the week</li></ul>
Cisco Expressway - SNMP	<ul style="list-style-type: none"><li>• Select <b>Enabled</b></li><li>• Set <b>Frequency</b> to <b>5 Minutes</b></li><li>• Set <b>Credential 1</b> to <b>exp-snmpv2</b></li><li>• Set <b>Credential 2</b> to <b>exp-snmpv2</b></li><li>• Select <b>Start Time</b> as immediate</li><li>• Select <b>Days</b>, each day of the week</li></ul>

MONITOR PROFILE » ELITE-EXP-E

**Groups**

Probe Group

- > 1-Cisco CUCM RIS CnDevice\_creds 3
- > 1b-PING Monitor 1
- > 4-Cisco CUCM Version 1
- > 5-Cisco RTMT 1
- > 6-Cisco Expressway-API 2
- > 6a-Cisco Expressway Call Detail-API 1
- > 6b-Cisco Expressway - SNMP 2
- > 7-CUCM Perfrom AXL Counters 1
- > 8-Cisco Unity Perfrom AXL Counters 1
- > 9-Cisco IMP Perfrom AXL Counters 1
- > 9a.CUCM-END USER 1
- > 9b.VOSS4UC 1
- > AudioCodes Gateway 1
- > AudioCodes1 1
- > BODYSHOX-Cisco Unity AXL (BODY... 2
- > BODYSHOX-Cisco Unity AXL (BODY... 1
- > BODYSHOX-CUCM Perfrom AXL (B... 1
- > BODYSHOX-CUCM Perfrom AXL (B... 1

**Templates/Profiles**

Name	Frequency	Credentials 1 & 2	Enabled
6a-Cisco Expressway Call Detail-API	10 Minutes	Expressway	<input checked="" type="checkbox"/>
6a-Cisco Expressway-API	10 Minutes	Expressway	<input checked="" type="checkbox"/>
6b-Cisco Expressway - SNMP	5 Minutes	exp-snmipv2	<input checked="" type="checkbox"/>
1b-PING Monitor	1 Minute	None	<input checked="" type="checkbox"/>