



Cisco Expressway Integration

Release 24.1

May 29, 2024

Copyright © 2024 VisionOSS Limited. All rights reserved.

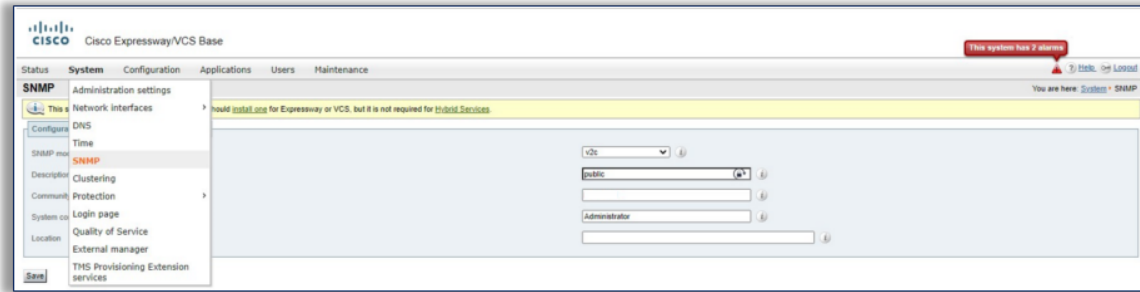
Contents

Configure Cisco Expressway	1
Set up Expressway on Arbitrator	3

Configure Cisco Expressway

1. Log in to your Expressway.
2. On the **System** tab, select **SNMP**, and fill out the following values in the order displayed here, then click **Save**:
 - **SNMP Mode**: for example v2c
 - **Description**: (optional) for example public
 - **Community Name**: community string name, for example cmpreadonly

- **System Contact:** for example Administrator



3. On the **Maintenance** tab, configure the following, then click **Save**:

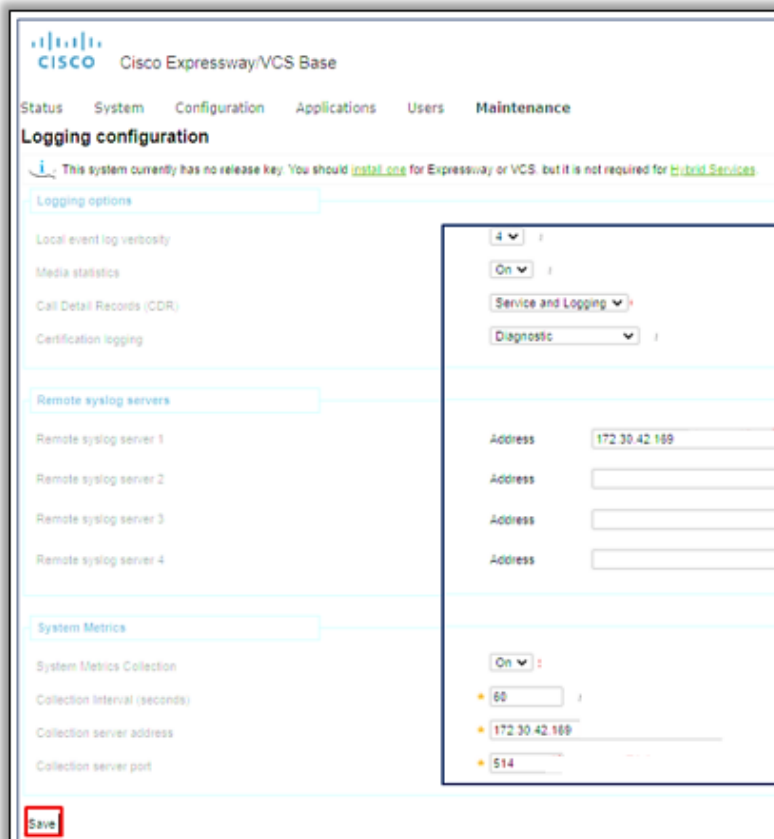
3.1. At **Logging Options**:

- Set **Local event log verbosity** to between 1 and 4.
- Set **Media Statistics** to *On*.
- Set **Call Detail Records (CDR)** to *Service and Logging*.
- Set **Certification logging** to *Diagnostic*.

3.2. At **Remote syslog servers**, for **Remote syslog server 1**, insert the IP address of the Arbitrator.

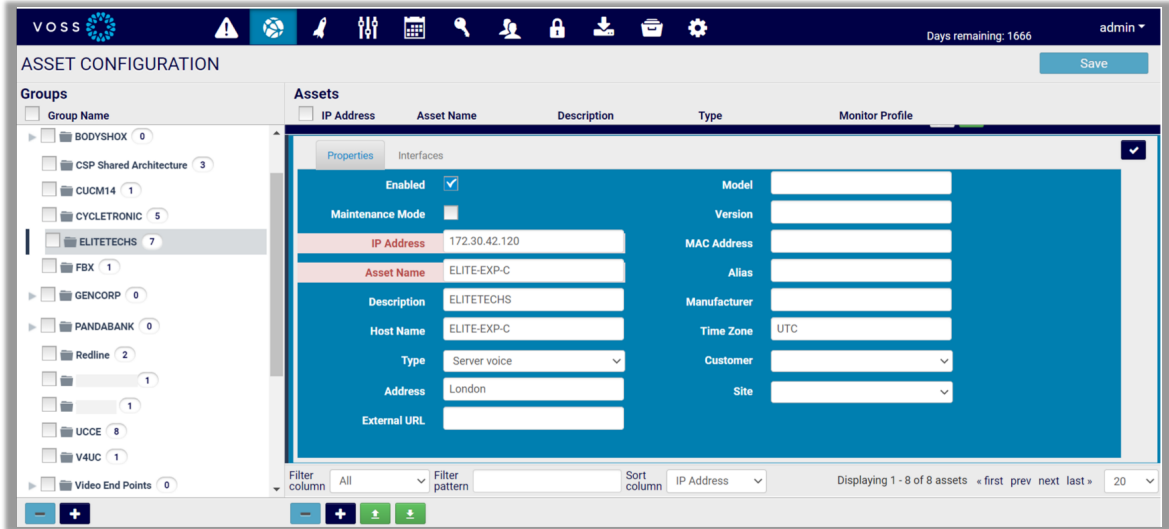
3.3. At **System Metrics**, configure the following:

- Set **System Metrics Collection** to *On*.
- Set **Collection Interval (seconds)** to *60*.
- At **Collection server address**, insert the IP address of the Arbitrator.
- Set **Collection server port** to *514*.

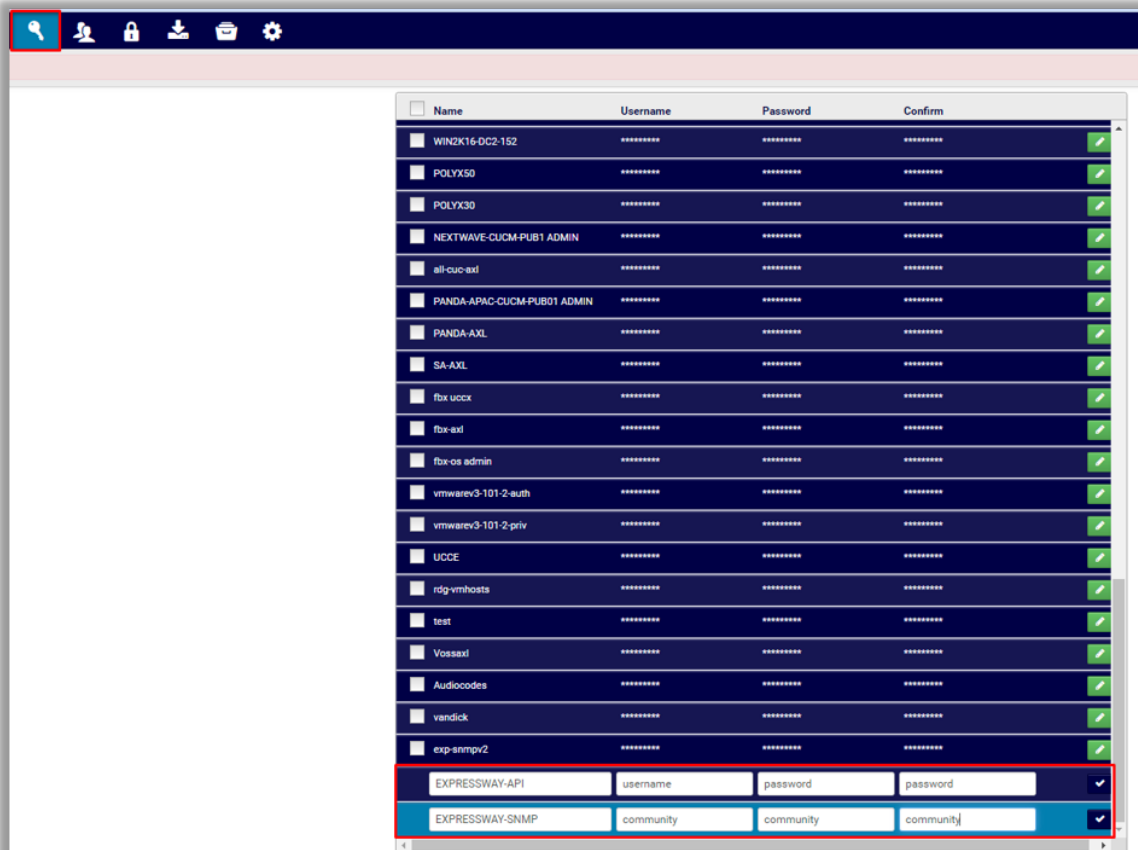


Set up Expressway on Arbitrator

1. Log in to Arbitrator.
2. Open the **Asset Configuration** page:
Click the toolbar Spanner icon (**System Configuration**), then click the **Assets** icon.
3. Choose relevant probe group.
4. Click the Plus icon (+) at the bottom of the **Assets** panel to add Expressways as assets.
5. Scroll down to the **Properties** tab, then fill out IP address, asset name, description, host name, type, address, and other relevant details. Save your changes.



6. Create credentials for Expressway API and Expressway SNMP.



7. Assign the following probes to the Expressway assets, and configure values as indicated in the table:

Probe	Configuration
PING Monitor	<ul style="list-style-type: none">• Select Enabled• Set Frequency to 1 Minute• Set Credential 1 to None• Select Start Time as immediate• Select Days, each day of the week
Cisco Expressway-API	<ul style="list-style-type: none">• Select Enabled• Set Frequency to 10 Minutes• Set Credential 1 to Expressway• Set Credential 2 to None• Select Start Time as immediate• Select Days, each day of the week
Cisco Expressway Call Detail-API	<ul style="list-style-type: none">• Select Enabled• Set Frequency to 10 Minutes• Set Credential 1 to Expressway• Set Credential 2 to None• Select Start Time as immediate• Select Days, each day of the week
Cisco Expressway - SNMP	<ul style="list-style-type: none">• Select Enabled• Set Frequency to 5 Minutes• Set Credential 1 to exp-snmpv2• Set Credential 2 to exp-snmpv2• Select Start Time as immediate• Select Days, each day of the week

MONITOR PROFILE » ELITE-EXP-E

Probe Group	Templates/Profiles	Frequency	Credentials 1 & 2	Enabled
1-Cisco CUCM RIS CnDevice_creds	6a.Cisco Expressway Call Detail-API	10 Minutes	Expressway	Enabled
1b-PING Monitor	1b-PING Monitor	1 Minute	None	Enabled
4-Cisco CUCM Version	6a.Cisco Expressway Call Detail-API	10 Minutes	Expressway	Enabled
5-Cisco RTMT	6a.Cisco Expressway - SNMP	5 Minutes	exp-snmipv2	Enabled
6-Cisco Expressway-API	6a.Cisco Expressway-API	10 Minutes	Expressway	Enabled
6a.Cisco Expressway Call Detail-API	6a.Cisco Expressway-API	10 Minutes	Expressway	Enabled
6b.Cisco Expressway - SNMP	6b.Cisco Expressway - SNMP	5 Minutes	exp-snmipv2	Enabled
7.CUCM Perfrom AXL Counters	6a.Cisco Expressway-API	10 Minutes	Expressway	Enabled
8.Cisco Unity Perfrom AXL Counters	6a.Cisco Expressway-API	10 Minutes	Expressway	Enabled
9.Cisco IMP Perfrom AXL Counters	6a.Cisco Expressway-API	10 Minutes	Expressway	Enabled
9a.CUCM-END USER	6a.Cisco Expressway-API	10 Minutes	Expressway	Enabled
9b.VOSS4UC	6a.Cisco Expressway-API	10 Minutes	Expressway	Enabled
AudioCodes Gateway	6a.Cisco Expressway-API	10 Minutes	Expressway	Enabled
AudioCodes1	6a.Cisco Expressway-API	10 Minutes	Expressway	Enabled
BODYSHOX-Cisco Unity AXL (BODY...	6a.Cisco Expressway-API	10 Minutes	Expressway	Enabled
BODYSHOX-Cisco Unity AXL (BODY...	6a.Cisco Expressway-API	10 Minutes	Expressway	Enabled
BODYSHOX-CUCM Perfrom AXL (B...	6a.Cisco Expressway-API	10 Minutes	Expressway	Enabled
BODYSHOX-CUCM Perfrom AXL (B...	6a.Cisco Expressway-API	10 Minutes	Expressway	Enabled