



# Cisco Expressway Integration

Release 23.2

Jul 31, 2023

Copyright © 2023 VisionOSS Limited. All rights reserved.

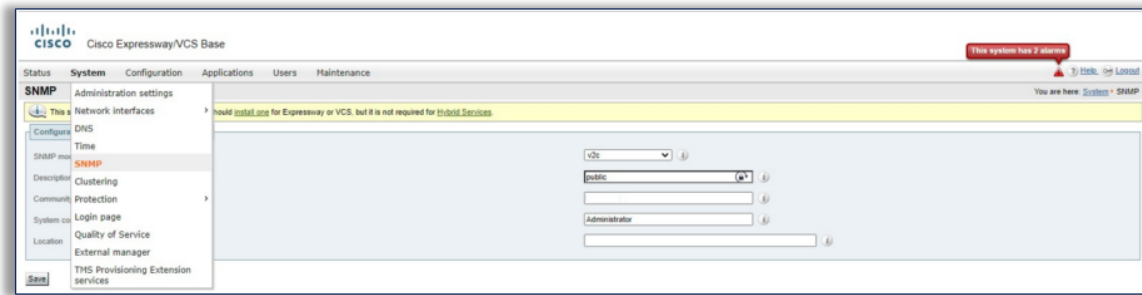
## Contents

Configure Cisco Expressway	1
Set up Expressway on Arbitrator	3

## Configure Cisco Expressway

1. Log in to your Expressway.
2. On the **System** tab, select **SNMP**, and fill out the following values in the order displayed here, then click **Save**:
  - **SNMP Mode**: for example v2c
  - **Description**: (optional) for example public
  - **Community Name**: community string name, for example cmpreadonly

- **System Contact:** for example Administrator



3. On the **Maintenance** tab, configure the following, then click **Save**:

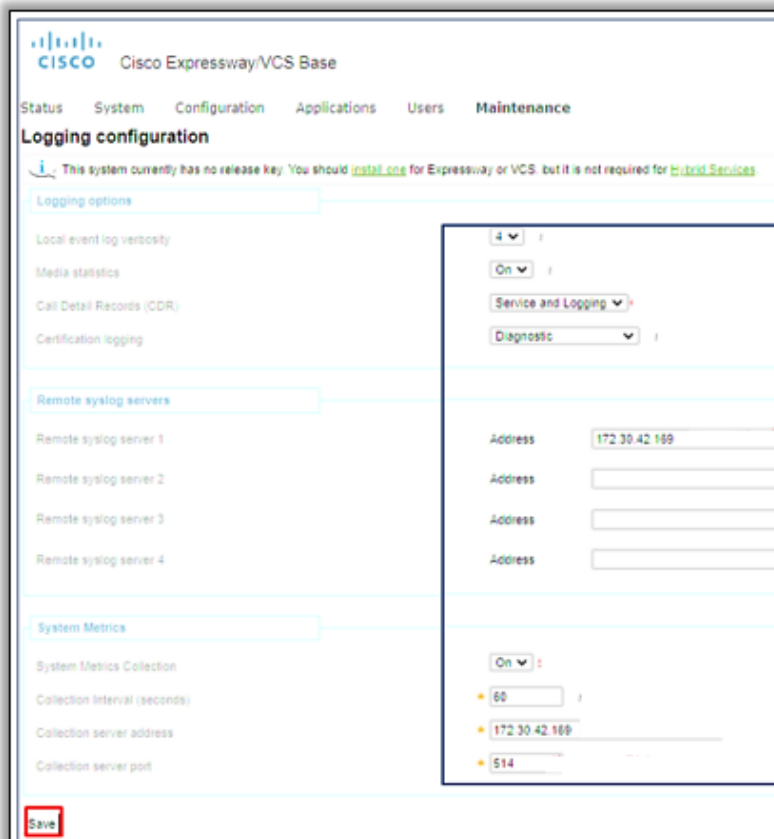
3.1. At **Logging Options**:

- Set **Local event log verbosity** to between 1 and 4.
- Set **Media Statistics** to *On*.
- Set **Call Detail Records (CDR)** to *Service and Logging*.
- Set **Certification logging** to *Diagnostic*.

3.2. At **Remote syslog servers**, for **Remote syslog server 1**, insert the IP address of the Arbitrator.

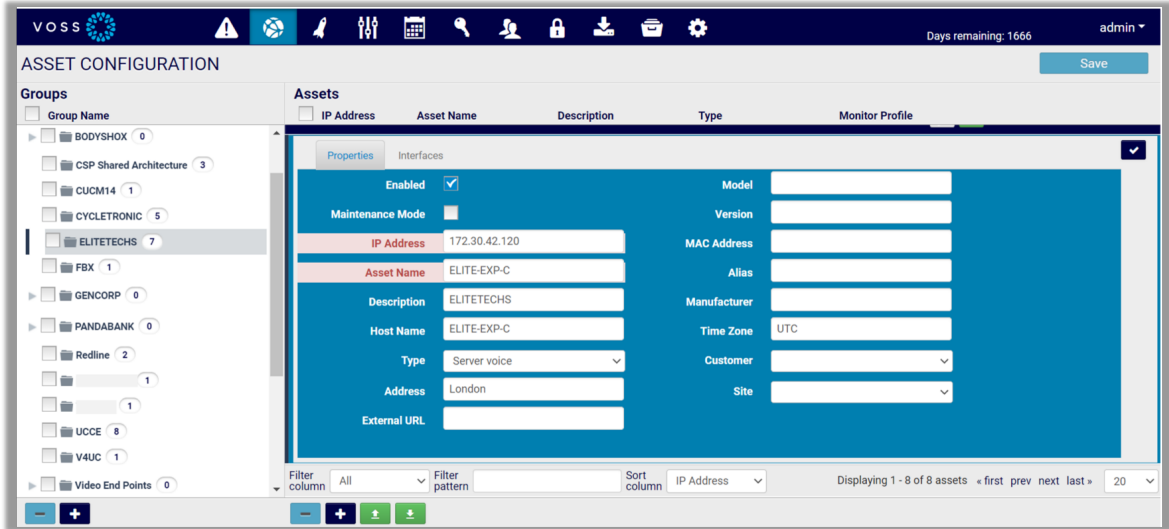
3.3. At **System Metrics**, configure the following:

- Set **System Metrics Collection** to *On*.
- Set **Collection Interval (seconds)** to *60*.
- At **Collection server address**, insert the IP address of the Arbitrator.
- Set **Collection server port** to *514*.

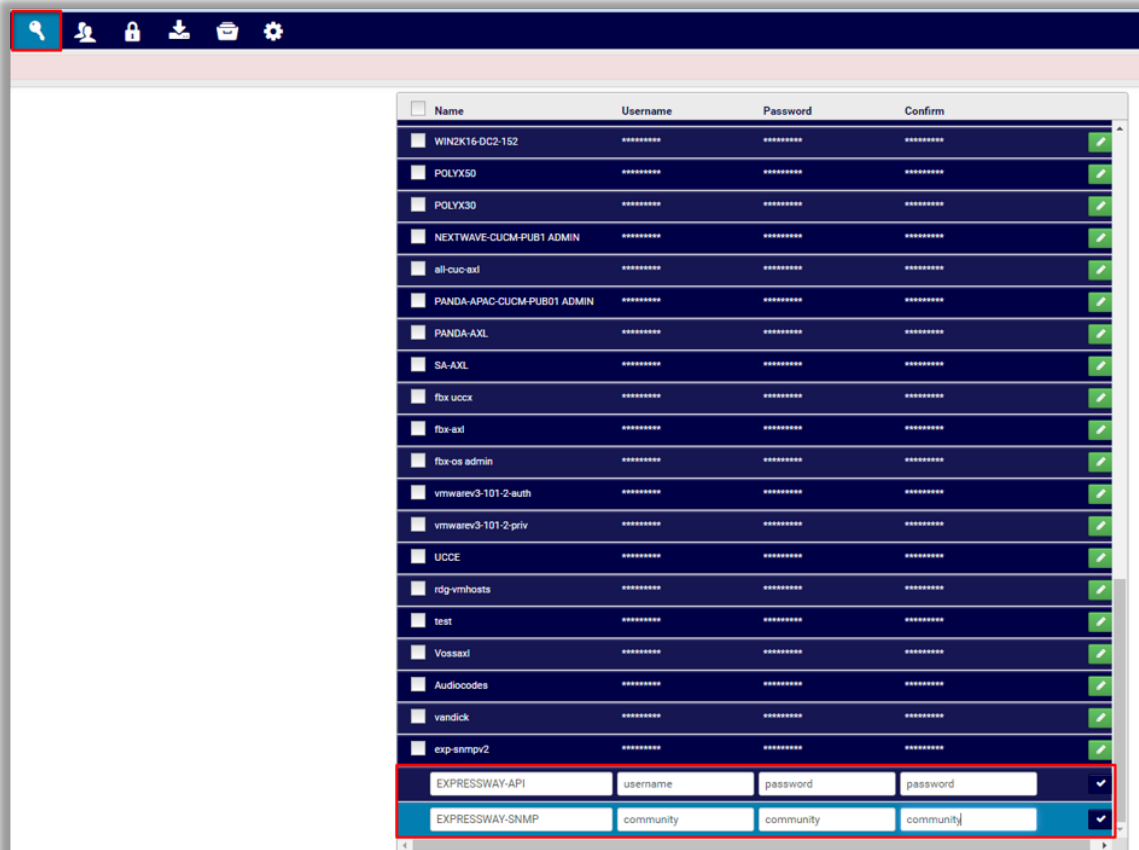


## Set up Expressway on Arbitrator

1. Log in to Arbitrator.
2. Open the **Asset Configuration** page:  
Click the toolbar Spanner icon (**System Configuration**), then click the **Assets** icon.
3. Choose relevant probe group.
4. Click the Plus icon (+) at the bottom of the **Assets** panel to add Expressways as assets.
5. Scroll down to the **Properties** tab, then fill out IP address, asset name, description, host name, type, address, and other relevant details. Save your changes.



6. Create credentials for Expressway API and Expressway SNMP.



7. Assign the following probes to the Expressway assets, and configure values as indicated in the table:

Probe	Configuration
PING Monitor	<ul style="list-style-type: none"> <li>• Select <b>Enabled</b></li> <li>• Set <b>Frequency</b> to <b>1 Minute</b></li> <li>• Set <b>Credential 1</b> to <b>None</b></li> <li>• Select <b>Start Time</b> as immediate</li> <li>• Select <b>Days</b>, each day of the week</li> </ul>
Cisco Expressway-API	<ul style="list-style-type: none"> <li>• Select <b>Enabled</b></li> <li>• Set <b>Frequency</b> to <b>10 Minutes</b></li> <li>• Set <b>Credential 1</b> to <b>Expressway</b></li> <li>• Set <b>Credential 2</b> to <b>None</b></li> <li>• Select <b>Start Time</b> as immediate</li> <li>• Select <b>Days</b>, each day of the week</li> </ul>
Cisco Expressway Call Detail-API	<ul style="list-style-type: none"> <li>• Select <b>Enabled</b></li> <li>• Set <b>Frequency</b> to <b>10 Minutes</b></li> <li>• Set <b>Credential 1</b> to <b>Expressway</b></li> <li>• Set <b>Credential 2</b> to <b>None</b></li> <li>• Select <b>Start Time</b> as immediate</li> <li>• Select <b>Days</b>, each day of the week</li> </ul>
Cisco Expressway - SNMP	<ul style="list-style-type: none"> <li>• Select <b>Enabled</b></li> <li>• Set <b>Frequency</b> to <b>5 Minutes</b></li> <li>• Set <b>Credential 1</b> to <b>exp-snmpv2</b></li> <li>• Set <b>Credential 2</b> to <b>exp-snmpv2</b></li> <li>• Select <b>Start Time</b> as immediate</li> <li>• Select <b>Days</b>, each day of the week</li> </ul>

The screenshot displays the 'MONITOR PROFILE > ELITE-EXP-E' configuration page. On the left, a 'Probe Group' list includes items like '18-PING Monitor', '4-Cisco CUCM Version', '5-Cisco RTMT', '6-Cisco Expressway-API', '6a-Cisco Expressway Call Detail-API', '6b-Cisco Expressway - SNMP', '7-CUCM Perfrom AXL Counters', '8-Cisco Unity Perfrom AXL Counters', '9-Cisco IMP Perfrom AXL Counters', '9a-CUCM-END USER', '9b-VOSS4UC', 'AudioCodes Gateway', 'AudioCodes1', 'BODYSHOX-Cisco Unity AXL (BODY...', 'BODYSHOX-Cisco Unity AXL (BODY...', 'BODYSHOX-CUCM Perfrom AXL (B...', and 'BODYSHOX-CUCM Perfrom AXL (B...'. The main area shows 'Templates/Profiles' with columns for Name, Frequency, Credentials 1 & 2, and Enabled. Four profiles are visible, each with a red box highlighting its Name, Frequency, and Credential 1 fields:

- 6a-Cisco Expressway Call Detail-API**: Frequency: 10 Minutes, Credential 1: Expressway
- 6b-Cisco Expressway - SNMP**: Frequency: 10 Minutes, Credential 1: Expressway
- 6b-Cisco Expressway - SNMP**: Frequency: 5 Minutes, Credential 1: exp-snmppv2
- 18-PING Monitor**: Frequency: 1 Minute, Credential 1: None