



# VOSS Insights Dashboard and Arbitrator Maintenance and Upgrade Guide

Release 23.1

Mar 15, 2023

## Legal Information

- Copyright © 2023 VisionOSS Limited.  
All rights reserved.
- This information is confidential. If received in error, it must be returned to VisionOSS ("VOSS"). Copyright in all documents originated by VOSS rests in VOSS. No portion may be reproduced by any process without prior written permission. VOSS does not guarantee that this document is technically correct or complete. VOSS accepts no liability for any loss (however caused) sustained as a result of any error or omission in the document.

DOCUMENT ID: 20230315100910

# Contents

- 1 What's New** **1**
  - 1.1 Dashboard and Arbitrator Maintenance and Upgrade Guide: Release 23.1 . . . . . 1
  
- 2 Upgrade** **2**
  - 2.1 Pre Checks . . . . . 2
  - 2.2 Backup VM before upgrades . . . . . 2
  - 2.3 Backup Dashboards before upgrades . . . . . 2
  - 2.4 Backup Arbitrator before upgrades . . . . . 2
  - 2.5 Upgrade timings . . . . . 5
  - 2.6 Upgrade Method of Procedure (MOP) . . . . . 5
  - 2.7 Patch install directions . . . . . 7
  - 2.8 Post Checks . . . . . 8
  
- 3 Add or Update Certificates** **11**
  - 3.1 Add Certificates . . . . . 11
  - 3.2 Update Certificates . . . . . 12

# 1. What's New

## 1.1. Dashboard and Arbitrator Maintenance and Upgrade Guide: Release 23.1

- EKB-13824: Add an option to Insights CLI menu to validate a file using the checksum. See: [Upgrade](#)
  - EKB-14447: Add certificate management to Admin so NRS/root is not required. See: [Add or Update Certificates](#)
- Added steps for new Apache Certs menu.

## 2. Upgrade

### 2.1. Pre Checks

1. Verify your access to the UI, then verify the application version via the profile menu (your username), for example, **admin** (top right).
2. Verify available storage of the disk of the server, via system/stats dashboards.

### 2.2. Backup VM before upgrades

If the application is a Virtual Machine (VM), then a pre-upgrade snapshot is recommended.

### 2.3. Backup Dashboards before upgrades

1. Log in to the UI as admin.
2. Click on your profile name (top right). As super user, this is **admin**.
3. Then, from the drop-down, select **Import/Export Wizard**.
4. Click the **Export** tab.
5. Select all the dashboards.
6. Click the **Export .Ixt** blue button on the top right.
7. Click the **Download** button, then save to your local computer or a secure network location.

### 2.4. Backup Arbitrator before upgrades

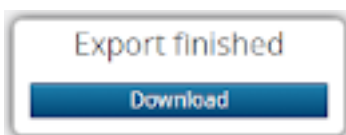
1. Log in to the UI as admin.
2. Select the System Configuration icon (spanner), then select the **Import & Export** icon (down arrow).
3. Drag the following items from the **Configuration Items** pane to the **Export** pane:
  - Asset Entries
  - Asset Groups

- Controls
- Policy Modules
- Probe Groups
- Response Procedures

The screenshot shows the VOSS 'IMPORT & EXPORT' interface. The 'Export' tab is selected, and the 'Configuration Items' list is displayed. The 'Response Procedures' item is highlighted in the list.

Configuration Items	Export
Arbitrator Nodes (0)	Asset Entries (36)
Asset Entries (36)	Asset Groups (10)
Asset Groups (10)	Controls (3)
Customers (0)	Policy Modules (58)
Controls (3)	Probe Groups (34)
Permission Groups (3)	Response Procedures (2)
Policy Modules (58)	
Probe Groups (34)	
Protected Subnets (0)	
Realms (0)	
Response Procedures (2)	
Users (1)	

4. Click **Export**

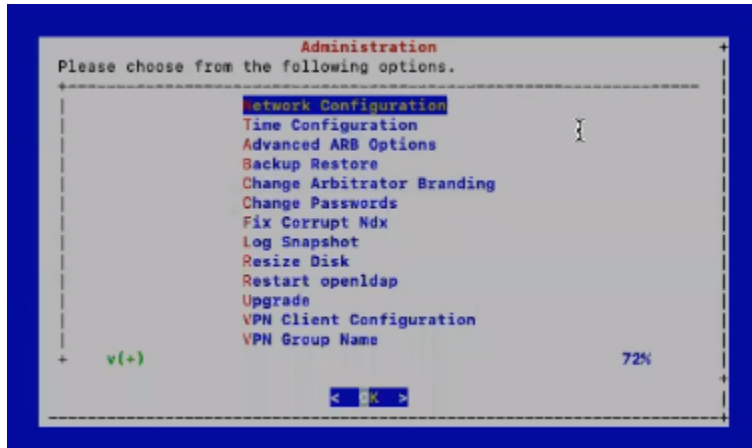


5. Click **Download**, then save to your local computer or a secure network location.

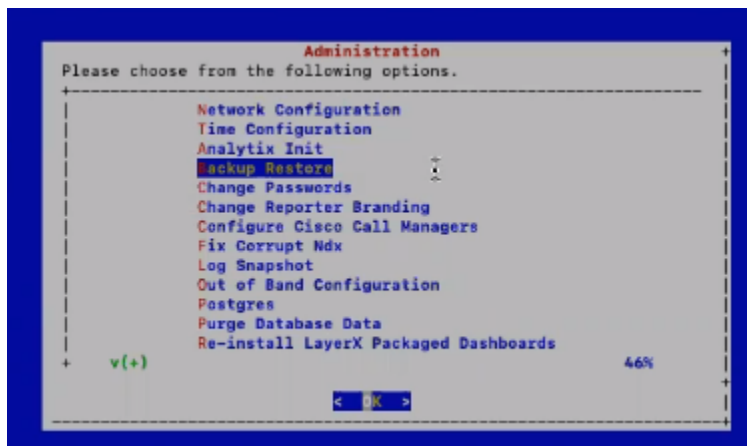
### 2.4.1. Admin menu Backup (Arbitrator or Dashboard)

From the admin account **Administration** menu:

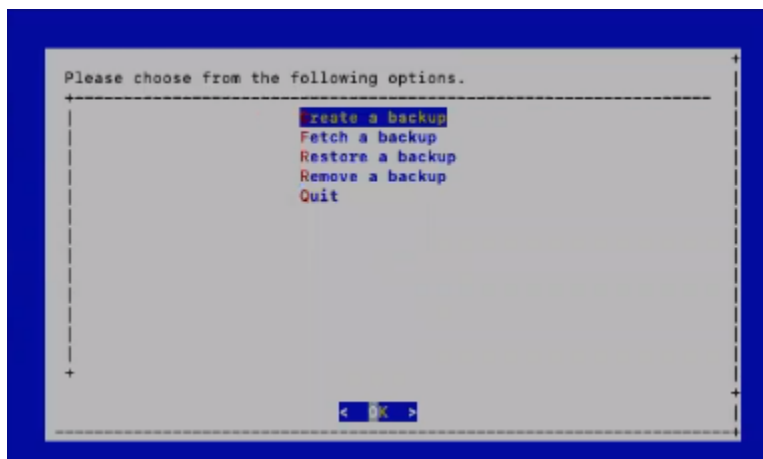
Arbitrator



or Dashboard

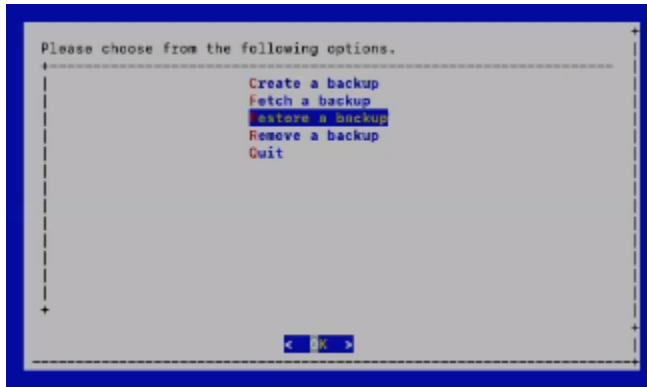


choose **Backup Restore**, and then choose **Create a backup**.



This backup creates a backup tar.bz2 file in the lxt\_archive/ directory.

If needed, then the **Administration** menu can be used to restore a selected backup.



**Note:** If any themes were present on the system, these are also backed up and will also be available from the restore list.



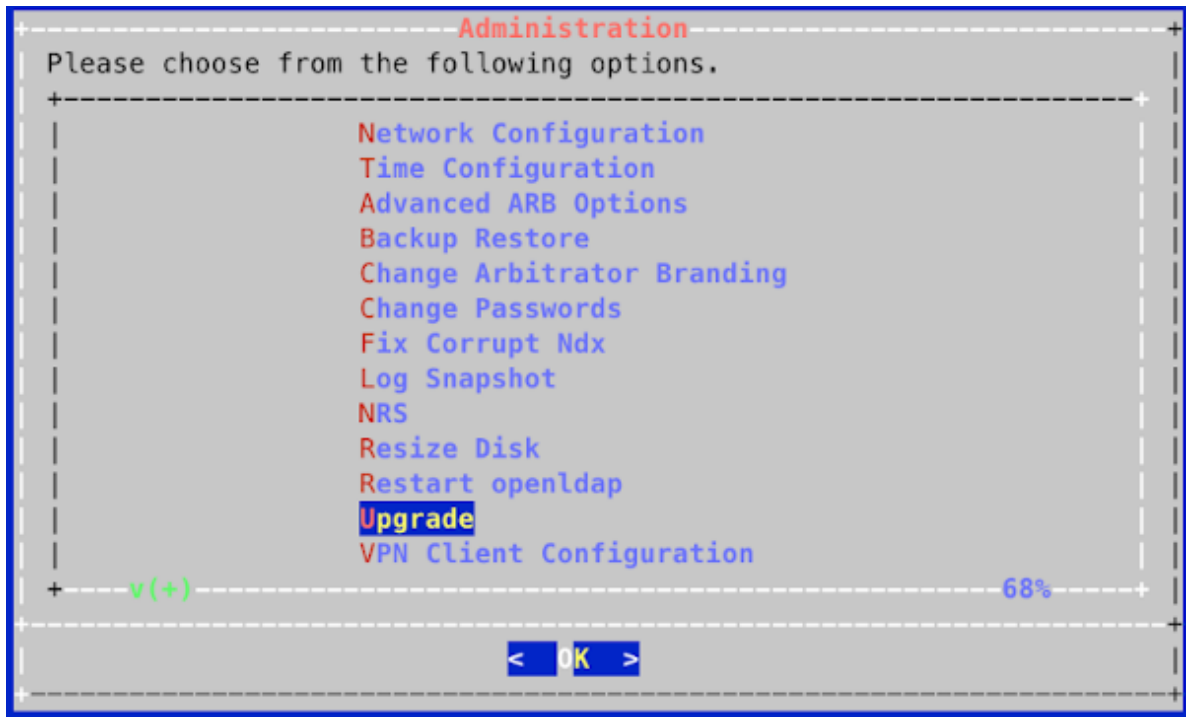
## 2.5. Upgrade timings

- Arbitrator = Approx 20-30 Mins
- Dashboard = Approx 20-60 Mins

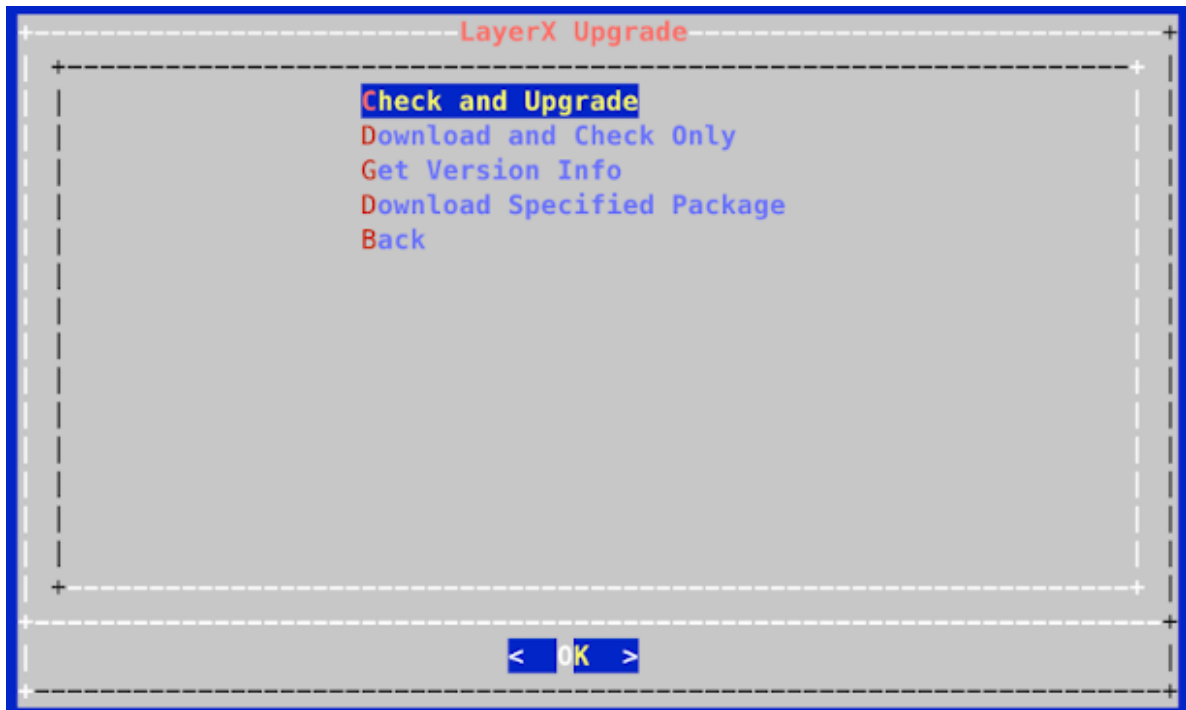
## 2.6. Upgrade Method of Procedure (MOP)

1. Using *Winscp* and the drop account, copy the file (example file for the arbitrator insights-arbitrator-<from>-<to>.lxsp) to the lxt\_upgrade directory.
2. Log in to server using *Putty* via the admin account.
3. Select **Upgrade** from the admin menu.



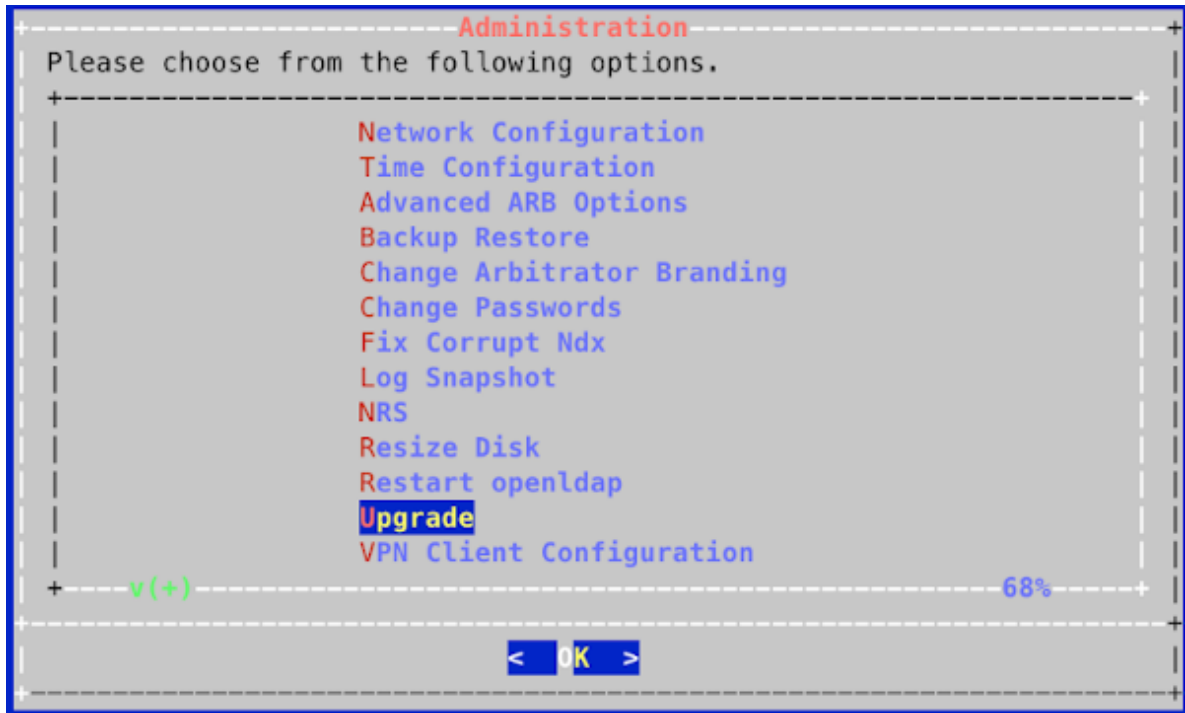


4. Select the **Check and Upgrade** option.

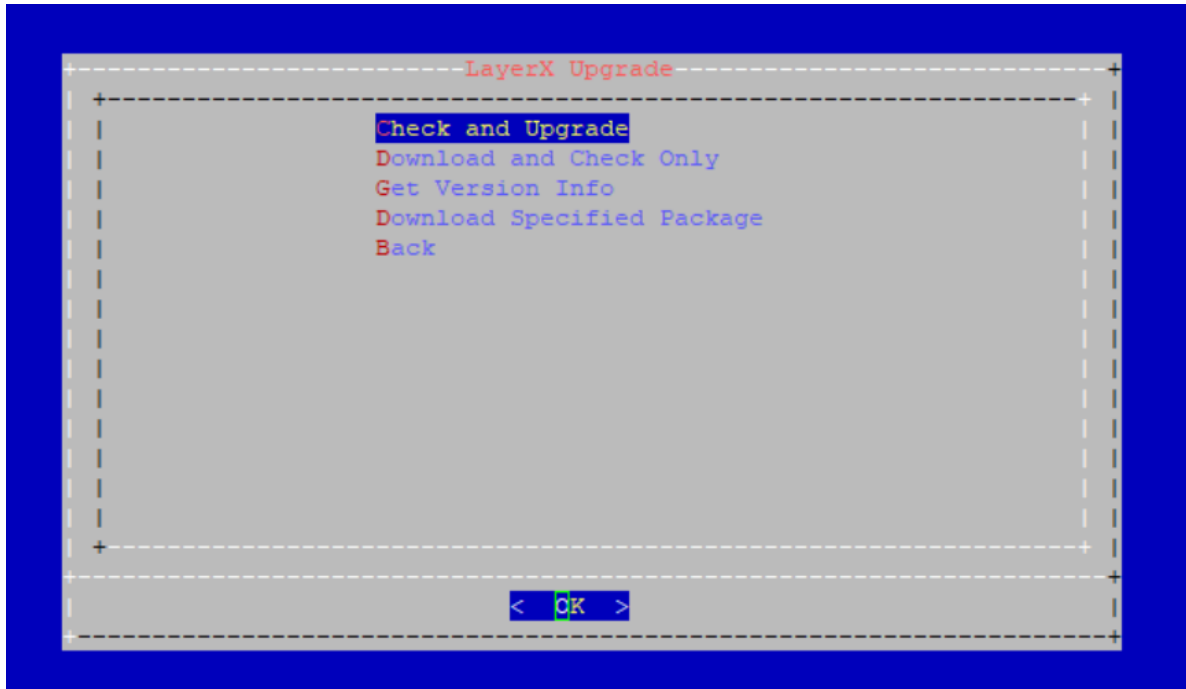


## 2.7. Patch install directions

1. Using *Winscp* and the drop account, copy the file (example file for the arbitrator insights-arbitrator-<from>-<to>.lxs) to the lxt\_upgrade directory.
2. Log on to the server using *Putty* and the admin user credentials
3. Navigate down to **Upgrade**



4. Select **Perform Checksum** and enter the downloaded filename. This step will verify the downloaded file against its .sha256 file.
5. Select the **Download Specified Package**



**Download Specified package** - Enter the following information changing the <upgrade filename> with the actual file name.

```
Please enter the path to download and install:  
█
```

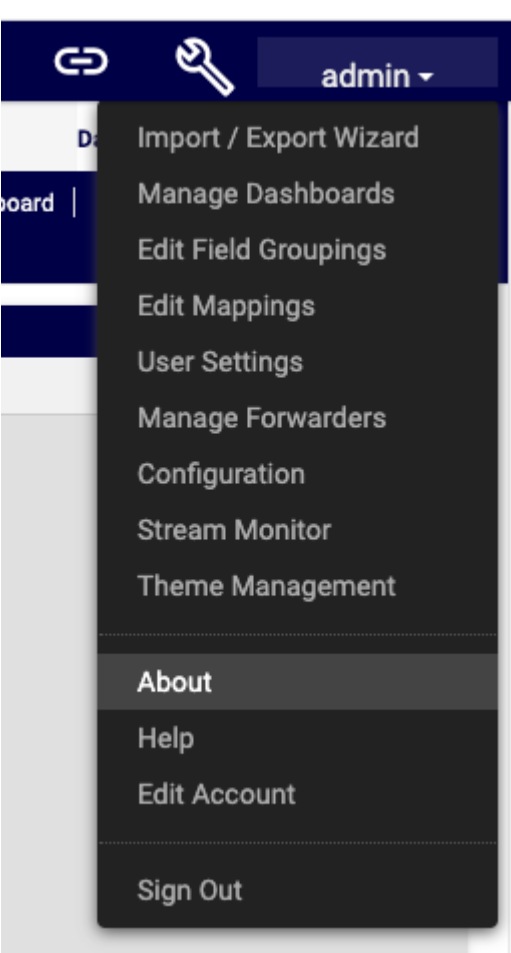
The downloaded filename may be entered, e.g.: insights-arbitrator-<from>-<to>.lxsp.

The file will continue to install

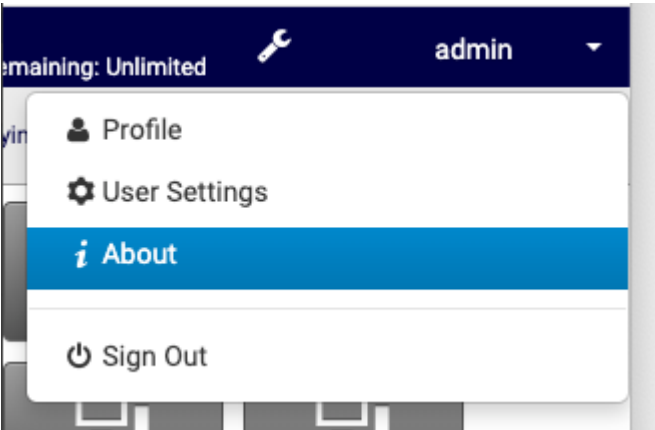
6. After the upgrade is complete, reboot the server and log in again to verify.

## 2.8. Post Checks

Check the system's version by selecting the **About** menu in the UI, for example:



or

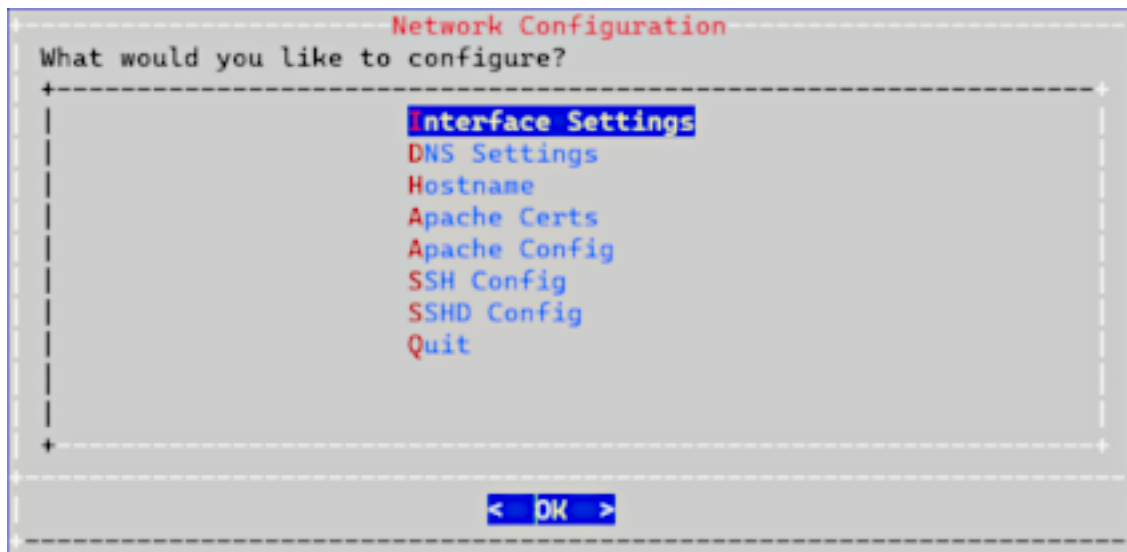




**Note:** If the version does not appear to be updated, then clear your browser's cache and reconnect.

## 3. Add or Update Certificates

Users can now update SSL Certificates and SSL keys from the Admin console menu.



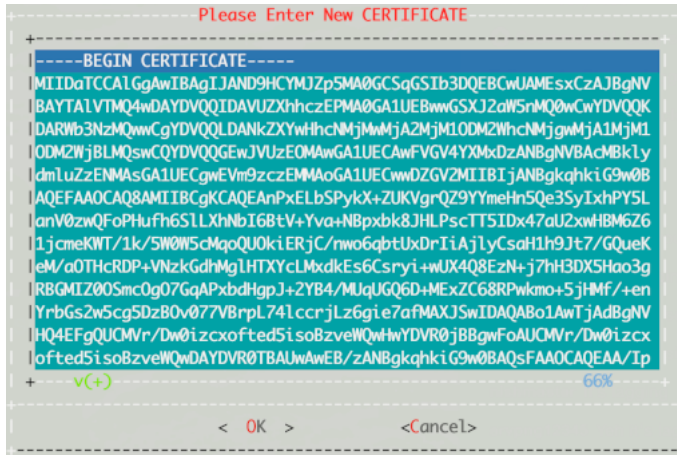
### 3.1. Add Certificates

To add your own certificate, you will need both the certificate and private key.

1. SSH to the system using admin account
2. Select **Network Configuration**
3. Select **Apache Certs**
4. Select **Insert Cert**
5. Paste in customer certificate

A certificate has the following header and footer

```
--BEGIN CERTIFICATE--  
--END CERTIFICATE--
```



6. Select **Insert Private Key**

7. Paste in customer private key

A private key has the following header and footer

```
--BEGIN PRIVATE KEY--
--END PRIVATE KEY--
```



8. Select **Display Cert Details** to view certificate details.

9. Select **Back** and exit the menu.

10. Refresh the browser. The system should be using the new certificate.

## 3.2. Update Certificates

If you want to generate a new unsigned certificate or to reset a certificate and private key:

1. SSH to the system using admin account
2. Select **Network Configuration**
3. Select **Apache Certs**
4. Select **Generate New Unsigned Cert**

5. When prompted, fill in the information requested.

```
Generating a 2048 bit RSA private key
.....+
.....+
writing new private key to '/etc/apache2/server.key'
-----
You are about to be asked to enter information that will be incorporated
into your certificate request.
What you are about to enter is what is called a Distinguished Name or a DN.
There are quite a few fields but you can leave some blank
For some fields there will be a default value,
If you enter '.', the field will be left blank.
-----
Country Name (2 letter code) [AU]:
```

6. Select **Back** and exit the menu.
7. Refresh browser. The system should be using the new unsigned certificate.