



Cisco Expressway Integration

Release 23.1

Mar 15, 2023

Copyright © 2023 VisionOSS Limited. All rights reserved.

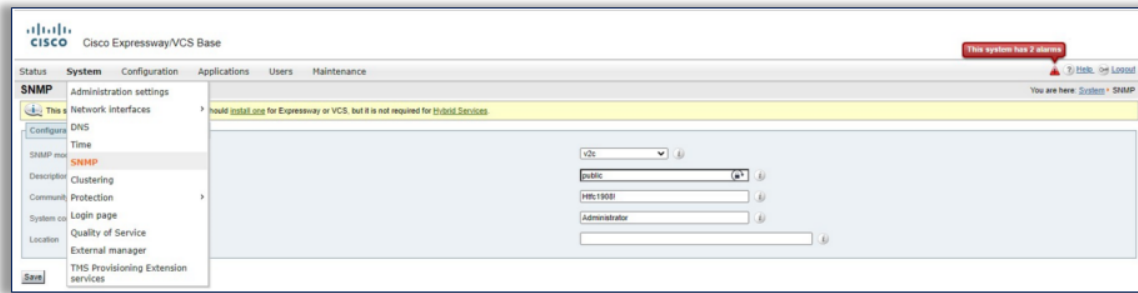
Contents

Configure Cisco Expressway	1
Set up Expressway on Arbitrator	3

Configure Cisco Expressway

1. Log in to your Expressway.
2. On the **System** tab, select **SNMP**, and fill out the following values in the order displayed here, then click **Save**:
 - *v2c*
 - *public*
 - *Htfc 1908!*

- Administrator



3. On the **Maintenance** tab, configure the following, then click **Save**:

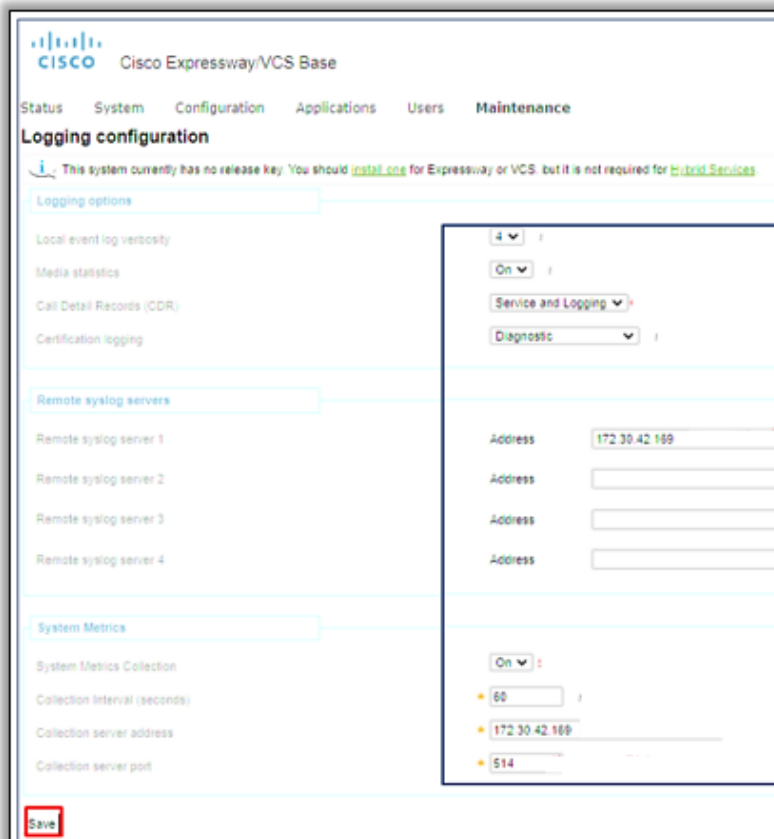
3.1. At **Logging Options**:

- Set **Local event log verbosity** to between 1 and 4.
- Set **Media Statistics** to *On*.
- Set **Call Detail Records (CDR)** to *Service and Logging*.
- Set **Certification logging** to *Diagnostic*.

3.2. At **Remote syslog servers**, for **Remote syslog server 1**, insert the IP address of the Arbitrator.

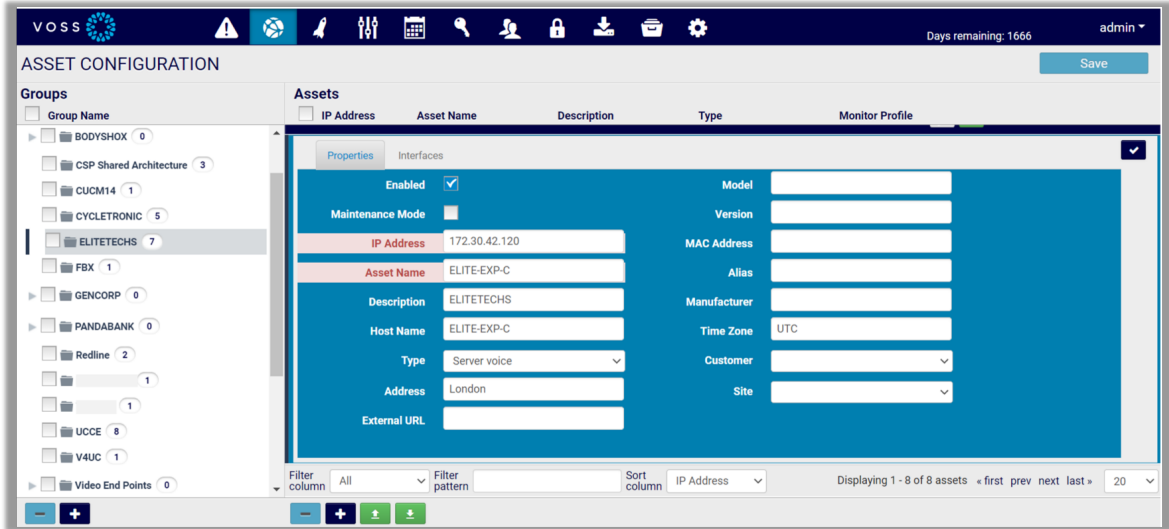
3.3. At **System Metrics**, configure the following:

- Set **System Metrics Collection** to *On*.
- Set **Collection Interval (seconds)** to *60*.
- At **Collection server address**, insert the IP address of the Arbitrator.
- Set **Collection server port** to *514*.

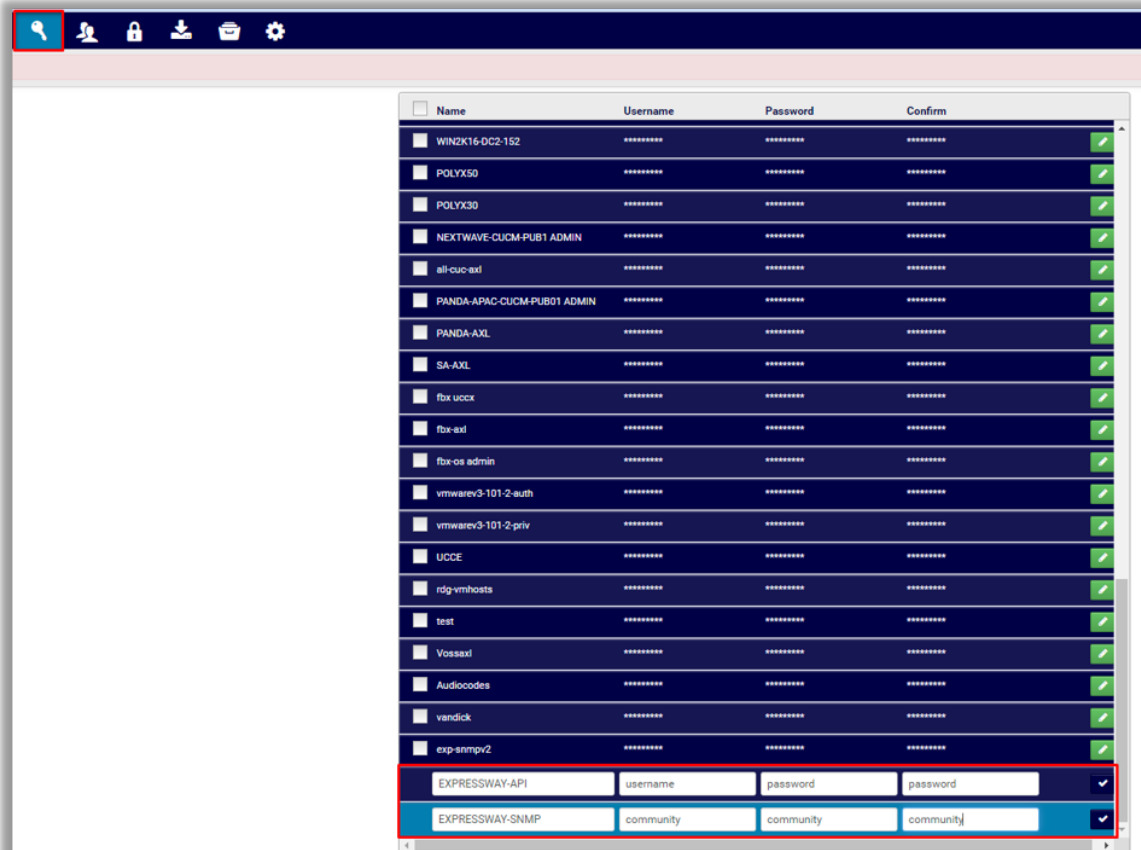


Set up Expressway on Arbitrator

1. Log in to Arbitrator.
2. Open the **Asset Configuration** page:
Click the toolbar Spanner icon (**System Configuration**), then click the **Assets** icon.
3. Choose relevant probe group.
4. Click the Plus icon (+) at the bottom of the **Assets** panel to add Expressways as assets.
5. Scroll down to the **Properties** tab, then fill out IP address, asset name, description, host name, type, address, and other relevant details. Save your changes.



6. Create credentials for Expressway API and Expressway SNMP.



7. Assign the following probes to the Expressway assets, and configure values as indicated in the table:

Probe	Configuration
PING Monitor	<ul style="list-style-type: none"> • Select Enabled • Set Frequency to 1 Minute • Set Credential 1 to None • Select Start Time as immediate • Select Days, each day of the week
Cisco Expressway-API	<ul style="list-style-type: none"> • Select Enabled • Set Frequency to 10 Minutes • Set Credential 1 to Expressway • Set Credential 2 to None • Select Start Time as immediate • Select Days, each day of the week
Cisco Expressway Call Detail-API	<ul style="list-style-type: none"> • Select Enabled • Set Frequency to 10 Minutes • Set Credential 1 to Expressway • Set Credential 2 to None • Select Start Time as immediate • Select Days, each day of the week
Cisco Expressway - SNMP	<ul style="list-style-type: none"> • Select Enabled • Set Frequency to 5 Minutes • Set Credential 1 to exp-snmpv2 • Set Credential 2 to exp-snmpv2 • Select Start Time as immediate • Select Days, each day of the week

